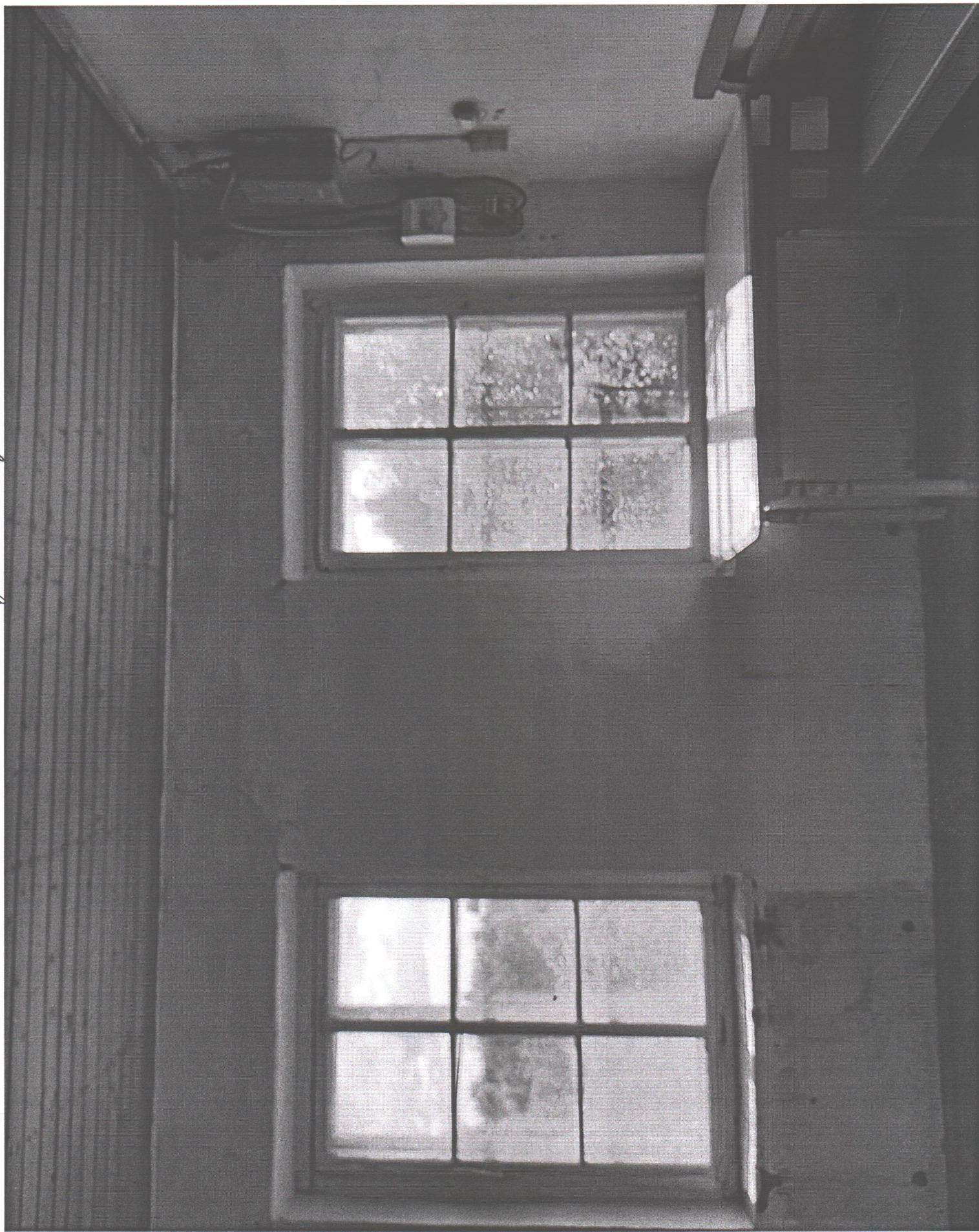


по №7. Комната где торговля в бане №10, Погребное "





A black and white photograph of a dark, rectangular wooden cabinet or chest of drawers against a light-colored, textured wall. The cabinet has a simple metal handle on its front. To the left, a portion of a wooden chair with vertical slats is visible. The wall shows signs of wear and cracking.

A black and white photograph of a dark, rectangular wooden cabinet or chest of drawers against a light-colored, textured wall. The cabinet has a small, light-colored handle in the center. To the left, a portion of a wooden chair with vertical slats is visible. The wall shows signs of wear and discoloration.